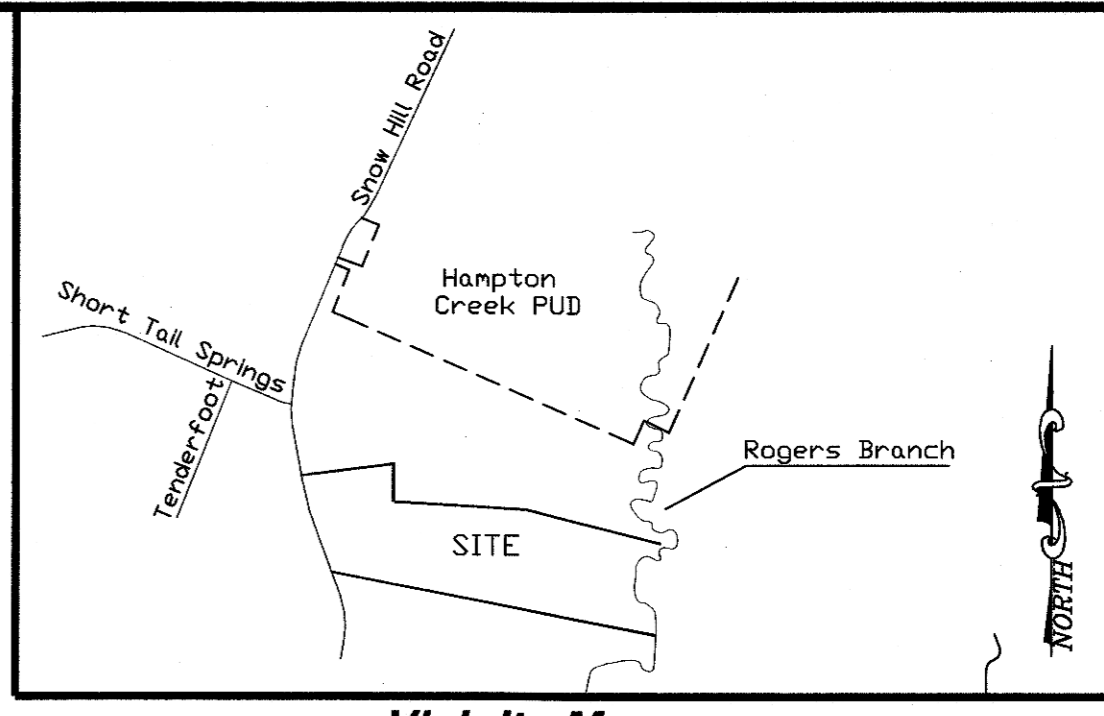
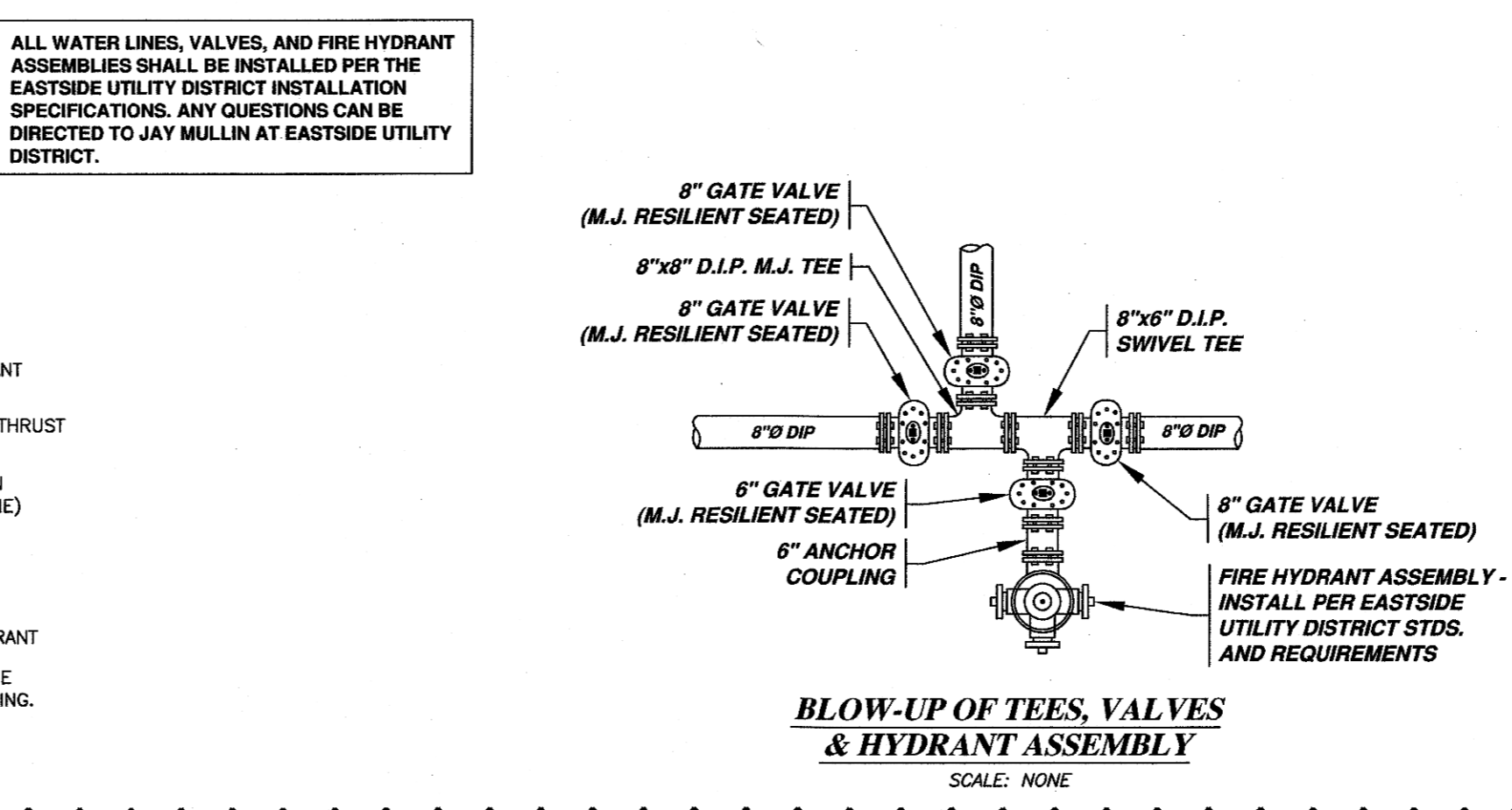
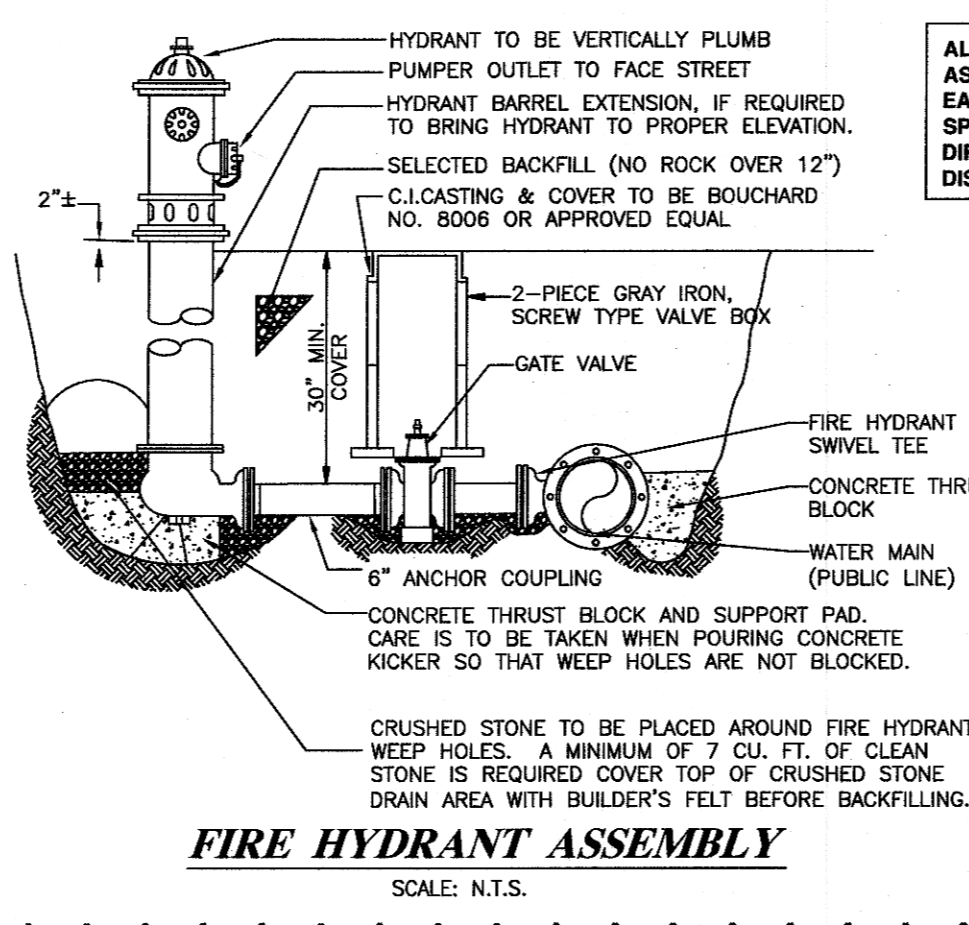


SITE UTILITY NOTES:

- THIS DRAWING DOES NOT PURPORT TO LOCATE ALL UTILITIES.
- EXISTING UTILITIES SHALL BE VERIFIED IN FIELD PRIOR TO ANY EXCAVATION OR INSTALLATION OF ANY NEW WATER LINES.
- WHERE WATER LINES PARALLEL SANITARY SEWER LINES, THE WATERLINE MUST HAVE A SEPARATION OF AT LEAST 10 FEET AND 18 INCHES PERPENDICULAR ABOVE OR BELOW THE TOP/BOTTOM OF THE SEWER LINE. IF SEWER LINE'S PERPENDICULAR CROSSING IS LESS THAN 18 INCHES, THE SEWER LINE SHALL BE OF DUCTILE IRON WITH MECHANICAL JOINTS AT LEAST 10 FEET ON BOTH SIDES OF THE CROSSING.
- ALL WORK AND MATERIALS SHALL COMPLY WITH HAMILTON COUNTY AND EASTSIDE UTILITY DISTRICT REGULATIONS AND CODES AND O.S.H.A. STANDARDS.
- LINES UNDERGROUND SHALL BE INSTALLED, TESTED AND APPROVED BEFORE BACKFILLING.
- CONTRACTOR TO CONTACT EASTSIDE UTILITY DISTRICT TO COORDINATE INSTALLATION AS REQUIRED.
- ALL FIRE HYDRANTS INSTALLED FOR THIS DEVELOPMENT SHALL BE OF A TYPE ACCEPTABLE TO EASTSIDE UTILITY DISTRICT AND HAMILTON COUNTY OR BRADLEY COUNTY SPECIFICATIONS.
- COORDINATE WITH EASTSIDE UTILITY DISTRICT AS REQUIRED FOR METER INSTALLATION.
- WATER MAIN TO HAVE A MINIMUM OF 30" COVE PER EASTSIDE UTILITY DISTRICT.
- ALL WATER LATERALS TO HAVE A MINIMUM OF 18" COVER PER EASTSIDE UTILITY DISTRICT.
- CONTRACTOR SHALL BE A STATE OF TENNESSEE LICENSED CONTRACTOR APPROVED TO INSTALL PUBLIC WATER MAINS.
- LUBRICANTS SHALL BE NON-TOXIC AND SHALL NOT PROMOTE BIOLOGICAL GROWTH.
- PROCEDURES FOR DISINFECTING PORABLE WATERLINES SHALL CONFORM TO THE REQUIREMENTS OF A.W.W.A. C651. ALL WATERLINES SHALL BE DISINFECTED, BACTERIOLOGICAL TESTED, AND PRESSURE TREATED ACCORDING TO EASTSIDE UTILITY DISTRICT SPECIFICATIONS PRIOR TO LINE ACCEPTANCE AND THE WATERLINE BEING PLACED INTO SERVICE.

- PRESSURE AND LEAKAGE TESTS SHALL BE PERFORMED IN STRICT ACCORDANCE WITH CURRENT A.W.W.A. STANDARD C600 AND/OR MANUFACTURER'S PROCEDURES.
- ALL VALVES AND FITTINGS ARE TO CONFORM TO THE LATEST A.W.W.A. STANDARDS.
- THE CONTRACTOR SHALL MAKE ARRANGEMENTS WITH THE UTILITY COMPANY FOR CONNECTION TO THE EXISTING UTILITY LINES. THE CONTRACTOR SHALL ADJUST THE LOCATION OF THE PROPOSED WATERLINE TO AVOID CONFLICTS WITH OTHER UTILITIES.
- ALL CONCRETE USED FOR THRUST BLOCKS TO HAVE A MINIMUM 28 DAY COMPRESSIVE STRENGTH OF 3000 PSI.
- THE CONTRACTOR IS RESPONSIBLE FOR THE COMPLETE INSTALLATION OF THE WATER SERVICE LINE AND FIRE LINE AS REQUIRED. THE CONTRACTOR SHALL PROVIDE A TAPPING VALVE AND SLEEVE AND OTHER MATERIAL AND EQUIPMENT AS REQUIRED FOR TAPPING THE EXISTING MAIN. THE CONTRACTOR SHALL BE RESPONSIBLE FOR THE FEE TO EASTSIDE UTILITY DISTRICT AS REQUIRED FOR TAPPING THE EXISTING MAIN AND COORDINATE WITH EASTSIDE AS REQUIRED. THE CONNECTION TO THE EXISTING MAIN SHALL BE MADE BY EASTSIDE UTILITY DISTRICT.
- ALL DETAILS TO SERVE AS REFERENCE ONLY. EASTSIDE UTILITY DISTRICT DETAILS, SPECIFICATIONS AND INSPECTION TO TAKE FINAL PRICARY.

UTILITY COMPANY INFORMATION:
 ELECTRICAL: MELVIN BUMGARDNER @ ELECTRIC POWER BOARD (423) 629-3524
 GAS: TULJO SOTO @ CHATTANOOGA GAS CO. (423) 490-4296
 SANITARY SEWER: HAMILTON COUNTY WWA (423) 209-7842
 TELEPHONE: TIM MANLY @ AT&T SOUTHEAST (423) 752-9181
 CABLE: TOM BAILEY @ COMCAST (423) 855-3900
 WATER: NICK OBERG @ EASTSIDE UTILITY DISTRICT (423) 490-9527



FIRE HYDRANT FLOW DATA

FIRE FLOW TEST PERFORMED BY EASTSIDE UTILITY DISTRICT RECEIVED ON MAY 13, 2022. TEST HYDRANT LOCATED AT 7222 TENDERFOOT TRAIL, FLOW HYDRANT LOCATED AT 8001 SHORT TAIL SPRINGS ROAD, ELEV.=752±

STATIC	140 psi
RESIDUAL	100 psi
FLOW	500 gpm

TOTAL NUMBER OF NEW FIRE HYDRANTS PROPOSED FOR THIS PROJECT - 11

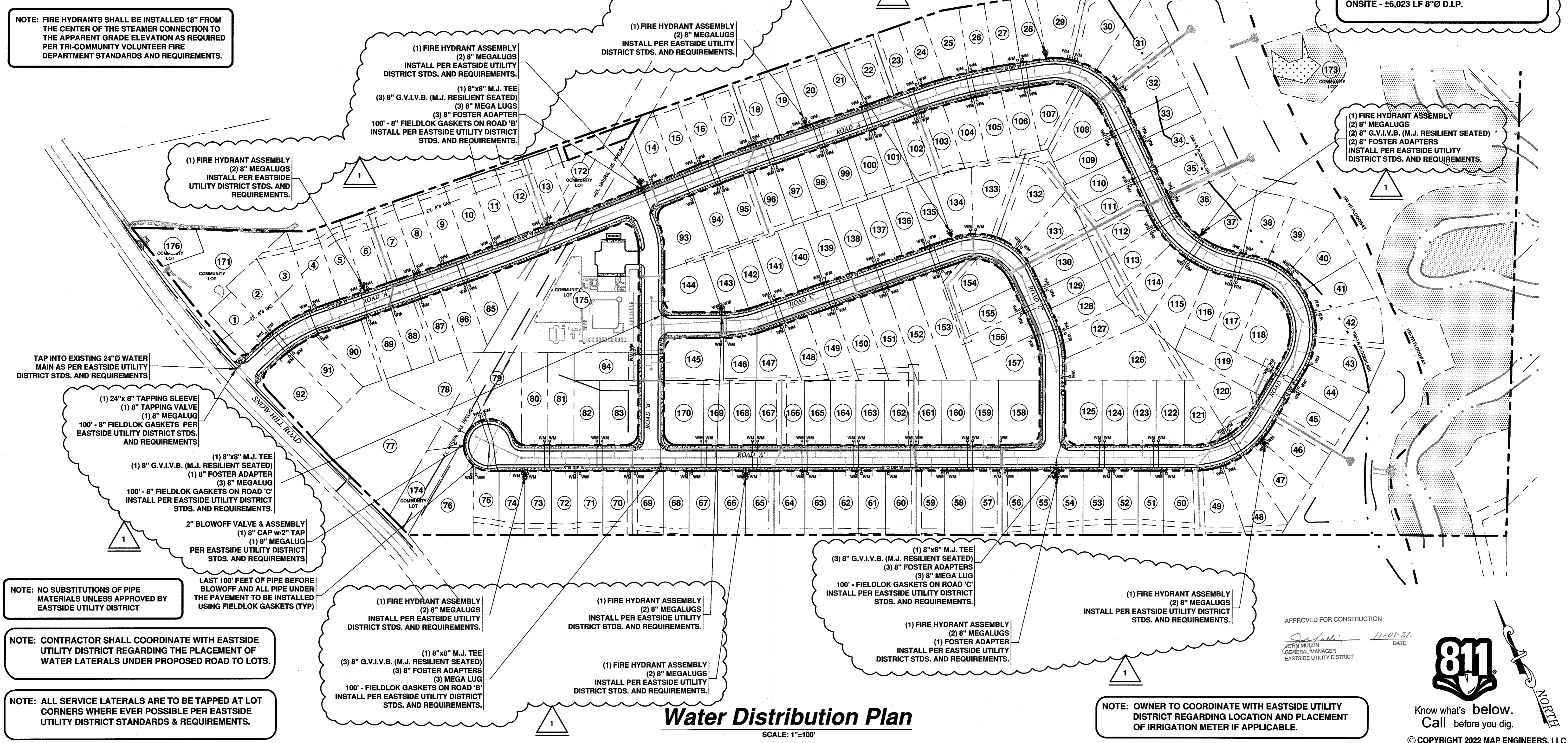
APPROXIMATE LENGTH OF NEW WATER MAIN: ONSITE - ±6,023 LF 8"Ø D.I.P.

NOTE: CONTRACTOR SHALL COORDINATE WITH EASTSIDE UTILITY DISTRICT, HAMILTON COUNTY FIRE MARSHAL AND TRI-COMMUNITY FIRE DEPARTMENT FOR FINAL LOCATION AND PLACEMENT OF ALL FIRE HYDRANTS ON-SITE.

MATERIAL NOTES

- WATER MAIN SHALL BE AS INDICATED ON PLANS: DUCTILE IRON PIPE CLASS 250-350 PER ANSI A-21.50 (AWWA C-151) AND ANSI A-21.10 (AWWA C-110) AND PER EUD SPECIFICATIONS. WATER MAINS SMALLER THAN 3": COPPER TUBE TYPE "K" (SOFT) PER ANSI B16.22.
- WHERE UNDERGROUND WATER MAINS AND HYDRANTS ARE TO BE PROVIDED, THEY MUST BE INSTALLED, COMPLETED, AND IN SERVICE PRIOR TO CONSTRUCTION WORK (NFPA 241 6.7.2.2).

NOTE: FIRE HYDRANTS SHALL BE INSTALLED 18" FROM THE CENTER OF THE STEAMER CONNECTION TO THE APPARENT GRADE ELEVATION AS REQUIRED PER TRI-COMMUNITY VOLUNTEER FIRE DEPARTMENT STANDARDS AND REQUIREMENTS.



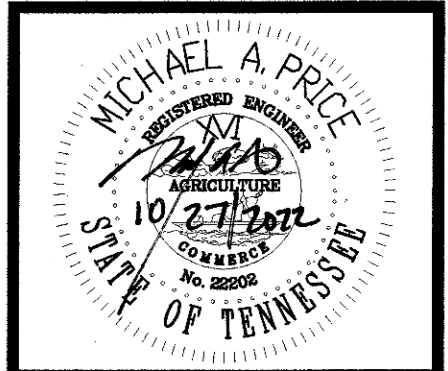
NOTE: NO SUBSTITUTIONS OF PIPE MATERIALS UNLESS APPROVED BY EASTSIDE UTILITY DISTRICT

NOTE: CONTRACTOR SHALL COORDINATE WITH EASTSIDE UTILITY DISTRICT REGARDING THE PLACEMENT OF WATER LATERALS UNDER PROPOSED ROAD TO LOTS.

NOTE: ALL SERVICE LATERALS ARE TO BE TAPPED AT LOT CORNERS WHERE EVER POSSIBLE PER EASTSIDE UTILITY DISTRICT STANDARDS & REQUIREMENTS.

APPROVED FOR CONSTRUCTION
 JOEY MULLIN
 GENERAL MANAGER
 EASTSIDE UTILITY DISTRICT
 11-01-22
 DATE

811
 Know what's below.
 Call before you dig.
 © COPYRIGHT 2022 MAP ENGINEERS, LLC



MAP ENGINEERS L.L.C.
 CELEBRATING 25 YEARS
 7890 Applepie Lane
 Chattanooga, TN 37421
 Tel: (423) 855-5554
 Fax: (423) 485-8110

RETREATS AT SNOW HILL
 RESIDENTIAL DEVELOPMENT
 FOR:
PRATT & ASSOCIATES
 1734 DAYTON BOULEVARD
 CHATTANOOGA, TN 37405

WATER DISTRIBUTION PLAN

REVISIONS

1	EASTSIDE COMMENTS	10/27/22
2		
3		
4		
5		

FILE: 20192_DRAWINGSET.DWG

ALL RIGHTS RESERVED
 This drawing is the property of MAP ENGINEERS, L.L.C. and shall not be reproduced in whole or in part. This drawing shall not be used for the construction of any other project without the written permission of the Engineer.

DATE: 02/20/22
 DRAWN BY: DAB
 CHECKED BY: MAP
 PROJ. NUMBER: 20-192
 SHEET NUMBER: **C-6**